

## RYD SERIES

### GLASS FIRE HOSE CABINETS

Fetaş RYD series fire cabinets are general-purpose fire cabinets that can be easily used by anyone, specially designed to save space in projects with limited space.

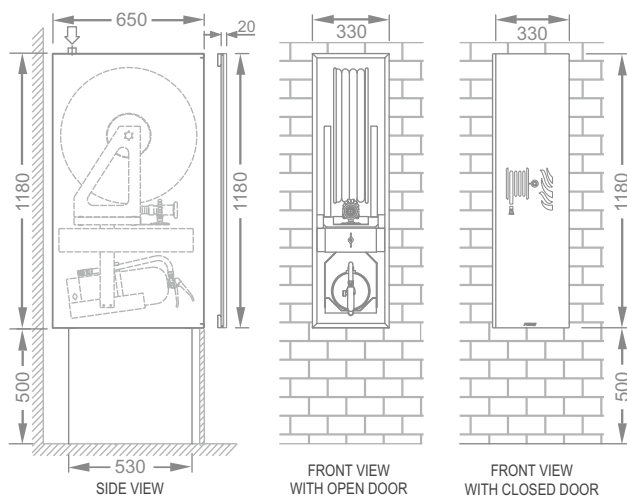
They are designed to provide aesthetic harmony as well as easy access in case of emergency with cover types that can fully adapt to the place where they are used, and safes that can be preferred as built-in or surface-mounted.

#### GENERAL FEATURES

Fire cabinets with single door, with extinguisher, 30m semi-rigid hose. Demountable fire cabinets suitable for indoor use, in EN 671-1 standard, CE approved.

#### CABINET WITH BASE

- **Iron phosphate** coating on DKP steel material and topcoat **polyester** powder paint coating.
- There is a water inlet point on the top of the case that allows **plumbing connections**.
- There is a mounting base under the cabinet that can carry the load of the cabinet
- Thanks to its **double bent** edges, it is resistant to reel load and impacts.
- Inside the case, there is a **rail mechanism** that allows the reel and tube slot to come out.
- It provides **fast** and easy assembly with its **demountable** feature.
- It is **long-lasting** with **ventilation and drainage** holes.
- Standard colors are RAL 9010 white, RAL 9005 black. It can also be produced in a different color in the desired RAL code or as Matt (Satined) / Glossy (Polished) stainless chrome.



MODEL	HOSE CAPACITY		EXTINGUISHER	CASA W x L x D (mm)	DOOR W x L x D (mm)
	DN19	DN25			
RYD-073 GCK	40m	30m	6kg	330 x 1180 x 650	330 x 1180 x 20

## INSIDE EQUIPMENT

- The reel system is manufactured in accordance with EN 671-1 standard.
- Semi-rigid hose reel with central water feeding, moving with a **rail mechanism**.
- Fire **extinguisher slot** that moves with the help of a rail mechanism with the reel.
- Guiding hose collar that helps pull the hose in the desired direction.
- All waterways are made of **brass** and corrosion-resistant **composite** materials.
- Internal plumbing with **galvanized** pipes up to the general plumbing connection point.
- DN 25 – PN 16 CrNi coating on brass material.
- Reel wheels with RAL 3002 red, polyester powder coating.
- **Brass material** reel hub with **4 o-ring seals and bearings**, brass DN 25 connection tail.
- Semi-rigid fire hose in accordance with **EN 694 standard**.
- **Reinforced** semi-rigid interconnection hose in accordance with EN 694.
- DN 25 jet-spray-off nozzle.
- **Galvanized** ring press, plastic **tubing covered** connection points.
- Dry Chemical Powder fire extinguisher with 6 kg dust capacity in accordance with TS 862 EN 3-8, TSE and CE certified.
- Manual **alarm button** conforming to EN 54-11, TSE and CE certified.
- Reel system that has passed **100%** leak seal and quality tests.

## GLASS DOOR

- It is produced with a **serigraphy** warning sign on enamel painted, 4mm **tempered**, breaking-resistant glass.
- It is an **aesthetically** oriented product with its specially designed invisible frame and **double-layered bent** hidden vertical handle.
- Frame and handle sections are iron phosphate coating on DKP steel material and final coat polyester powder paint coating.
- Complete with adjustable and 180° opening hinges.
- Long-lasting easy use with **magnetic lock** mechanism.
- Thanks to its **demountable** feature, it can be easily assembled after the construction process is completed.

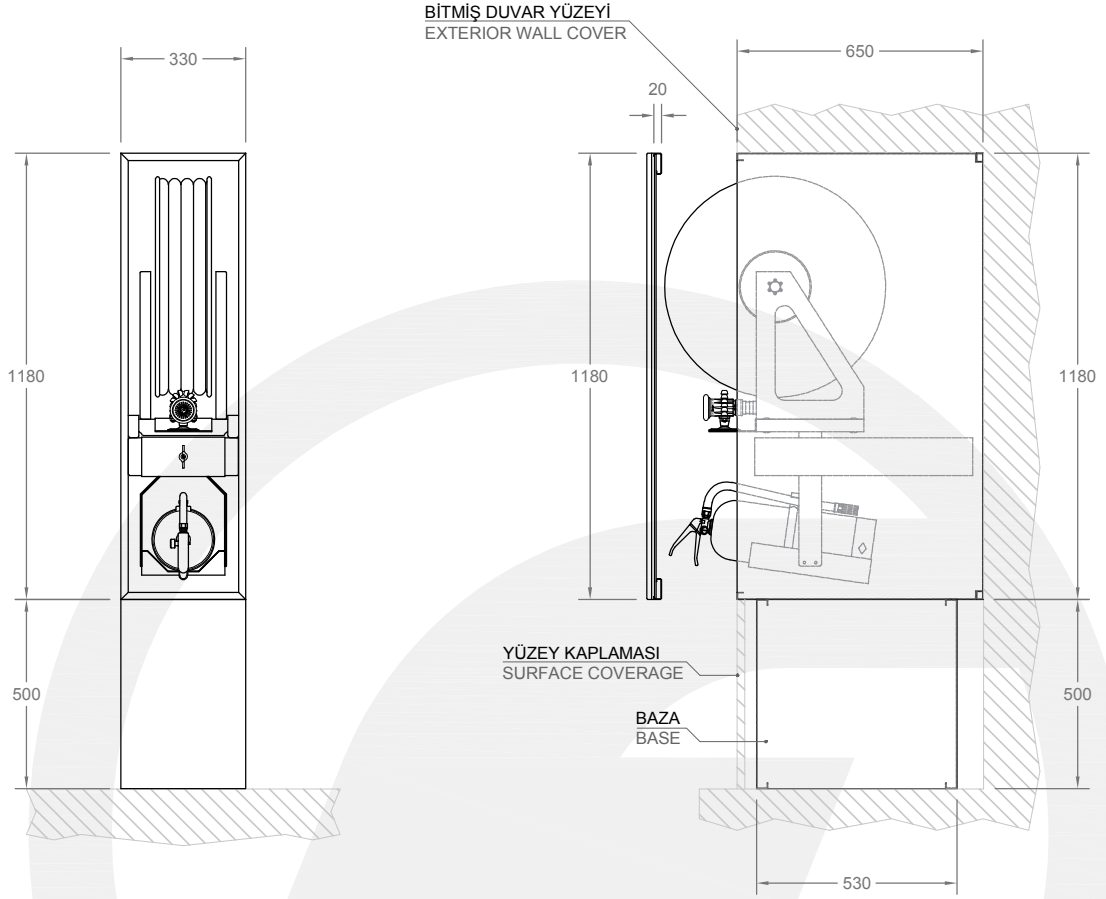


RAL 9005



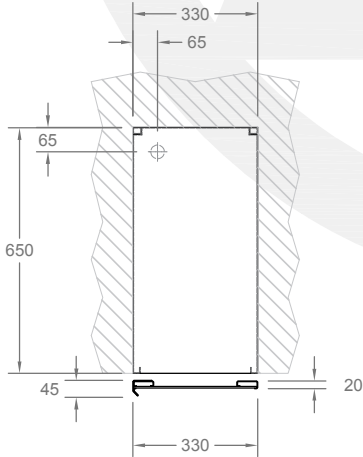
RAL 9010

# RYD-73 GCK

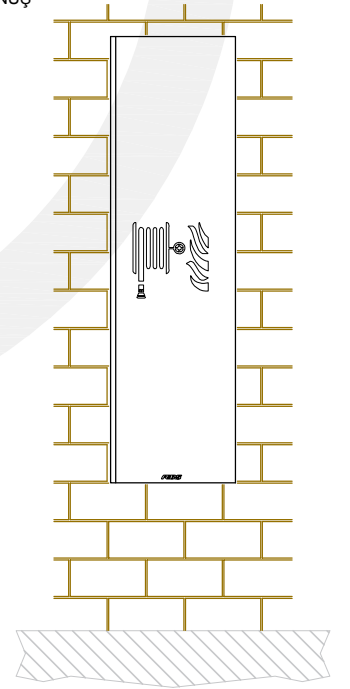


ÖN GÖRÜNÜŞ  
FRONT VIEW

YAN GÖRÜNÜŞ  
SIDE VIEW



ÜST GÖRÜNÜŞ  
TOP VIEW



KAPASİTE / CAPACITY : 1" 30m Hortum + 6 kg KKT Yangın Tüpü / 1" 30m Hose + 6 kg DRY Fire Extinguisher

ÇİZEN / DRW. BY	Yasin DEMİR	YÜZEY FINISH	—	ÖLÇEK / SCALE		<b>TR</b> <b>EN</b>			
KONT. / CONT. BY	Emre YİĞİTTEKİN	MALZEME MATERIAL	—	<b>1 : 20</b>	BİRİM / UNIT			Fetaş Yangın Ekipmanları Makina Metal Sanayi ve Ticaret A.Ş. Dağyaka Mah. 2035. Cad. Küme Evi No: 51. Kahrarakazan 06980 Ankara - TÜRKİYE Tel: +90. 444 96 69 info@fetas.com www.fetas.com	
ONAY / APP. BY	Cihan TUNA	AĞIRLIK WEIGHT	—						mm
TARİH / DATE	03.09.2025	SAYFA PAGE	1 / 1	A4					
ÇİZİM KODU DRAWING CODE	<b>RYD-73 GCK</b>								

-Tüm hakları saklıdır. Bu belge, FETAŞ'tan yazılı izin alınmaksızın hiçbir şekilde üçüncü şahıslara çoğaltılamaz veya iletilmez. Ürünlerimizi geliştirmeye yönelik sürekli araştırma ve geliştirme çalışmaları yürütülmekte olup, bu nedenle önceden bildirimde bulunmaksızın herhangi bir teknik özelliği değiştirme hakkımız saklıdır.  
-All rights reserved. Reproduction or issue to third parties in any form whatever is not permitted without written authority from FETAŞ. Continuous research and development is taking place to improve our products and therefore we reserve the right to change any specification without prior notice.